

# D614 HD Capture Dual User Manual



# Important Safety Instructions

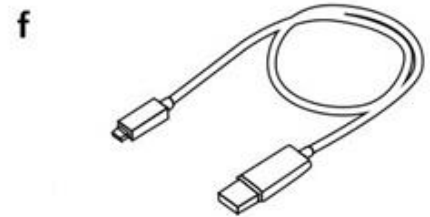
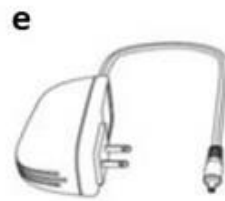
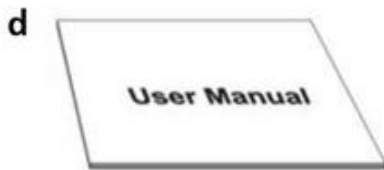
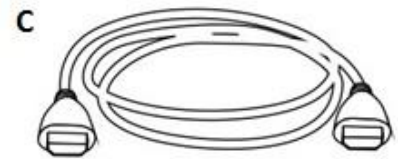
Before using D614 HD Capture Dual, please ensure that you read and understand the safety precautions below:

1. Do not attempt to open the case of D614 Capture Dual or modify it in any way, as this will void the warranty.
2. Keep D614 HD Capture Dual away from water and other liquids, as this may cause the unit to malfunction.
3. D614 Capture Dual may become warm during use. This does not indicate malfunction.
4. Do not place heavy objects on D614 Capture Dual, as this may cause the unit to overheat and malfunction.
5. If the exterior of D614 Capture Dual requires cleaning, wipe it with a soft dry cloth.
6. Do not dispose of the unit via conventional domestic waste.

# Table of Contents

<b>Important Safety Instruction</b>	<b>1</b>
<b>Table of Contents</b>	<b>2</b>
<b>What's included</b>	<b>3</b>
<b>Product Connectors</b>	<b>4</b>
<b>Connection Instruction and installtion</b>	<b>5</b>
<b>Standalone Mode</b>	
<b>1. Installation</b>	<b>5</b>
<b>2. Record / Capture to USB or TF Card</b>	<b>6</b>
<b>PC Mode</b>	
<b>1. Software Installation &amp; Connection</b>	<b>7</b>
<b>2. PC Software (GXPlayer) registration &amp; key features</b>	<b>8-9</b>
<b>Upload video to YouTube</b>	<b>10-12</b>
<b>Live Streaming via XSplit</b>	<b>13-15</b>
<b>Live Streaming via OBS</b>	<b>16-18</b>
<b>Record / Capture to PC</b>	<b>19-20</b>
<b>Schedule Recording &amp; Set up</b>	<b>20-21</b>
<b>New Firmware Upgrade Instruction</b>	<b>22</b>
<b>Product Specifications</b>	<b>23</b>
<b>Contact</b>	<b>24</b>

# What's included



**a. D614 Capture**

**b. Installation CD**

**c. HDMI Cable**

**d. User Manual**

**e. Power Adapter**

**f. Micro USB Cable**

# Product Connectors



No.	Standalone	Dual Mode
1	Power	Power
2	DC input 5V/2A	DC input 5V/2A
3	HDMI IN	HDMI IN
4	HDMI OUT	HDMI OUT
5	MIC input	MIC input
6	USB2.0	USB2.0
7		Mirco USB2.0 ( USB to PC )
8	Record/Stop button	Record/Stop button
9	LED light	LED light

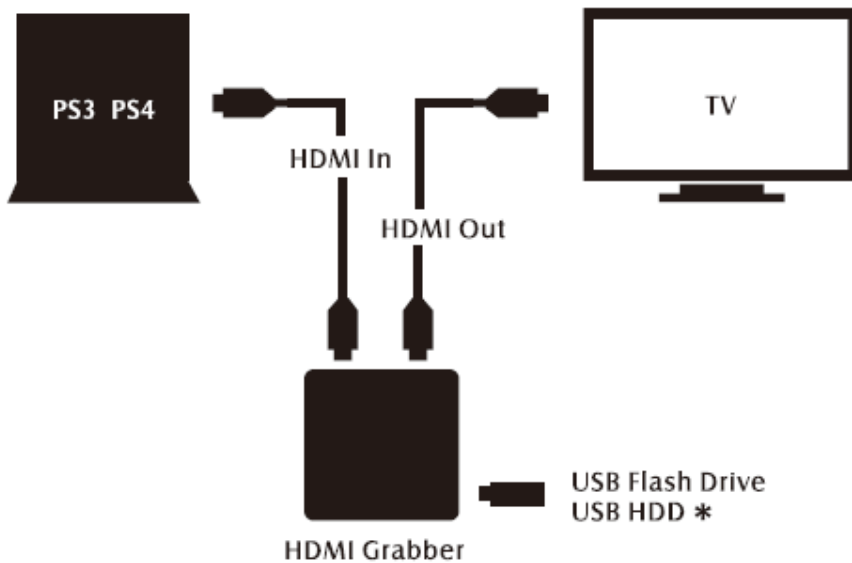


## Connection instruction and installations (Standalone Mode)

### 1. Installation

- (1) Make sure the PS3/4 video/audio output are setup correctly before you begin.
- (2) Connect PS3/PS4 (output) to HD Grabber Dual (input) via HDMI cable.
- (3) Connect HD Grabber Dual to TV via HDMI cable.
- (4) Make sure gameplay is visible on TV screen. (If TV screen is black, try to press & hold REC/STOP button for 10 seconds).
- (5) Connect USB HDD/USB Flash Drive to HD Capture Dual

PlayStation 3 and PlayStation 4 XBOX 360 and XBOX ONE



\* External power may be required for some USB HD

## 2. Record/Capture to USB or HDD

1. Switch on power, LED will flash quickly in blue and green.
2. Connect video source to HD Grabber Dual. LED will turn blue (1080i/p) or green (720p).
3. Connect a USB storage device to the USB port of HD Grabber Dual.
4. Press REC/STOP button to start recording, the LED will flash slowly.
5. Press REC/STOP button again to stop recording.
6. The LED will flash in blue / green slowly. DO NOT remove USB device as the file is being saved. The LED goes off when file is saved.

**NOTE:** D614 supports FAT32 & NTFS formats only. In FAT32, it will record a new file when the previous recording file reaches the maximum 2GB capacity, the maximum is 32GB for FAT; in NTFS there is no 2GB per file limitation D614 will record as long as needed.

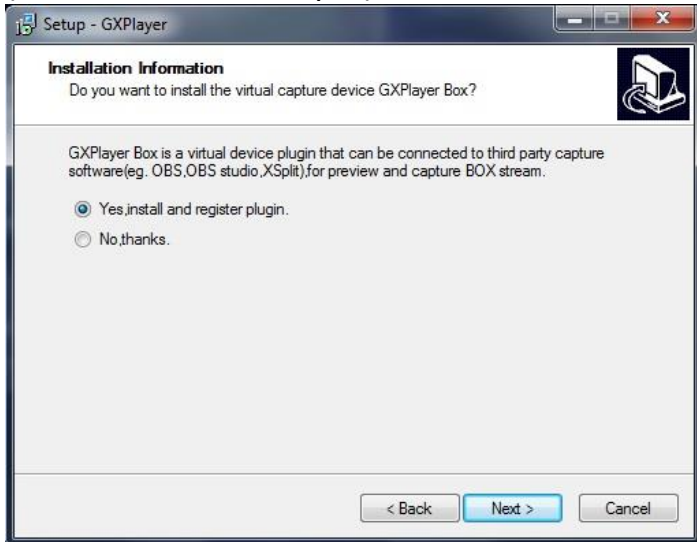
When HDD or USB storage is full, D614 stops recording and LED will go off. D614 saves files in MPEG4 format. The resolution can be set at either 720p or 1080p for capture. Please note that not all games/video files are produced at 1080p. D614 will record approximately 1GB per 10mins at either 720p or 1080p.

# PC Mode

## 1. Software Installation & Connection

<1> Install GXPlayer on PC

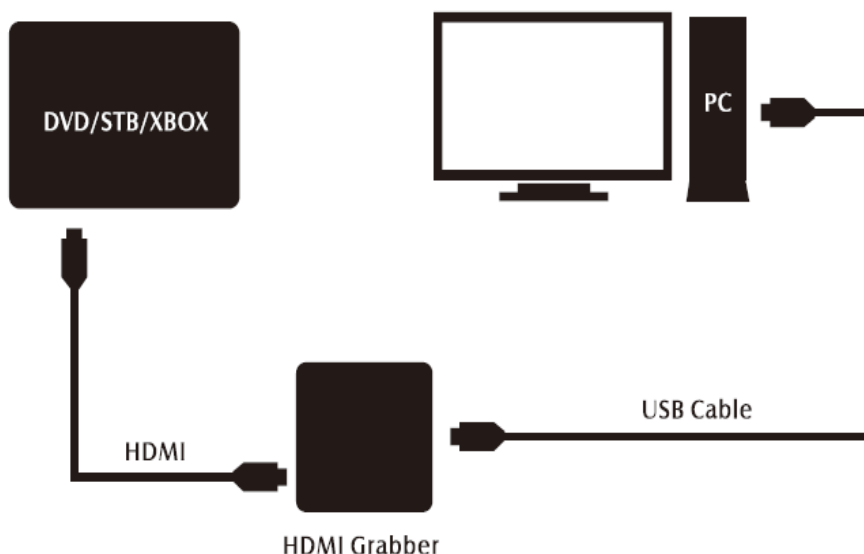
Download the software GXPlayer from <http://www.tevii.com/Support.asp> or get it from the installation CD. Make sure you install the plugin for 3rd party streaming software (OBS, OBS studio, XSplit).



After the installation completed, please restart your computer first before using GXPlayer.

<2> Connect the devices


- (1) Connect Video source to HD Capture Dual via HDMI cable.
- (2) Connect HD Capture Dual (Micro USB) to PC via USB cable.
- (3) Open PC software GXPlayer & make sure video is visible. (If TV Screen is black, try to press & hold REC/STOP button for 10 seconds).
- (4) GXPlayer will record the file into PC HDD.

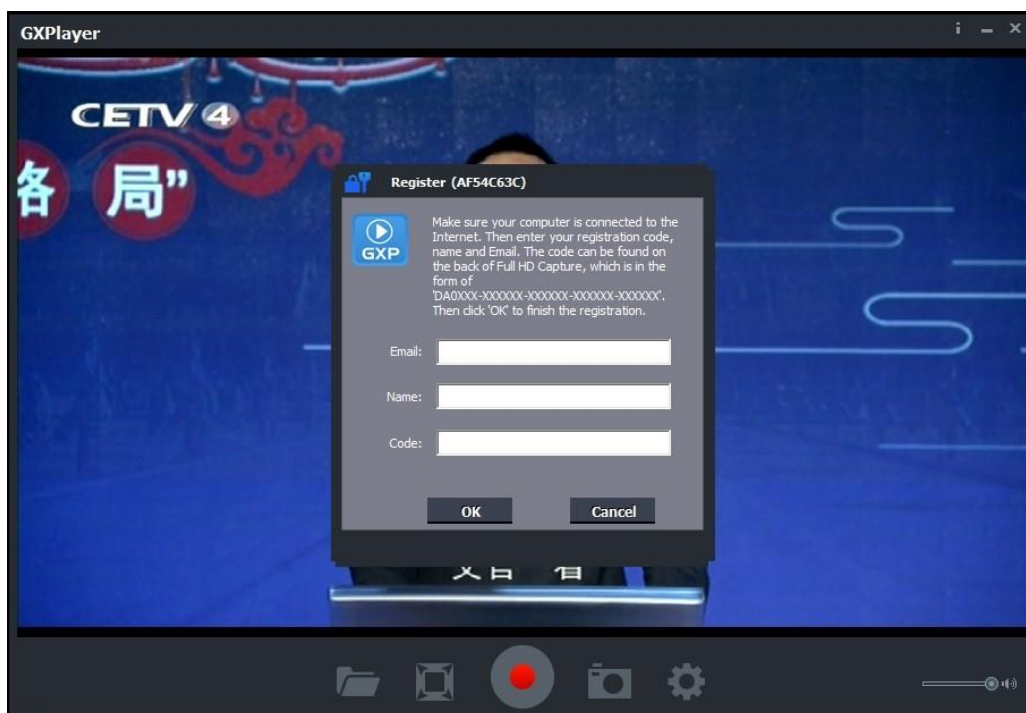
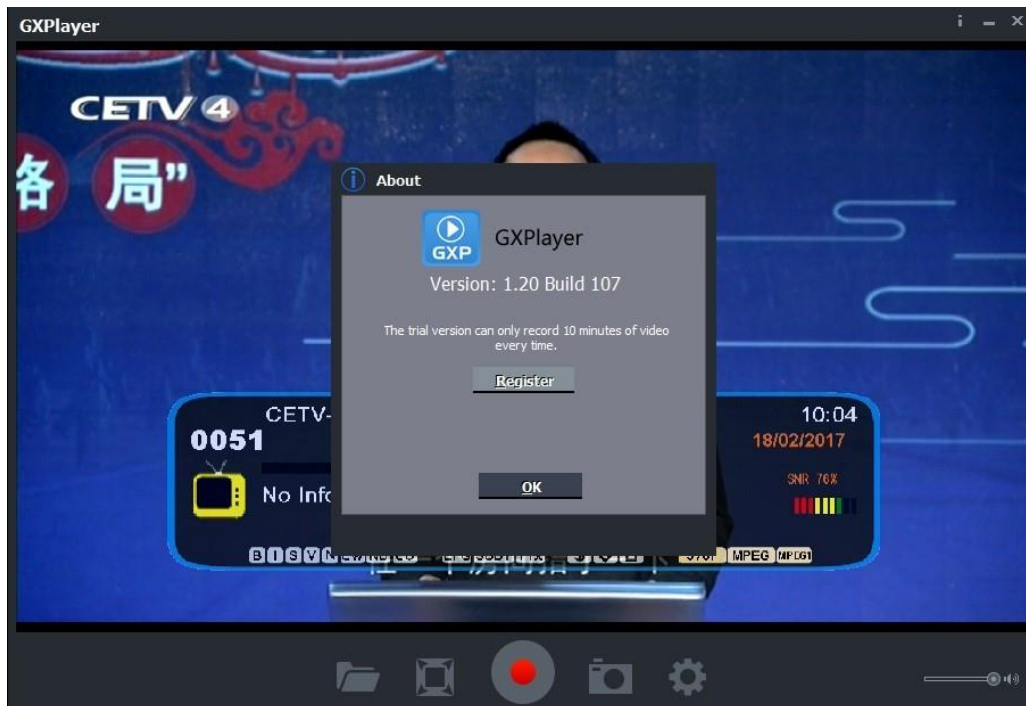




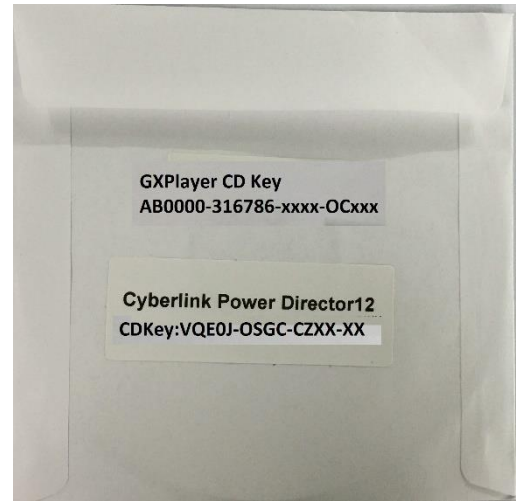
## 2. PC Software(GXPlayer) registration & Key features

Please register GXPlayer online before using it or you can only record up to 10 minutes.

Run GXPlayer. Click  on screen upright corner to open the "About" window. Then click on the "Register" button to open the "Register" window.



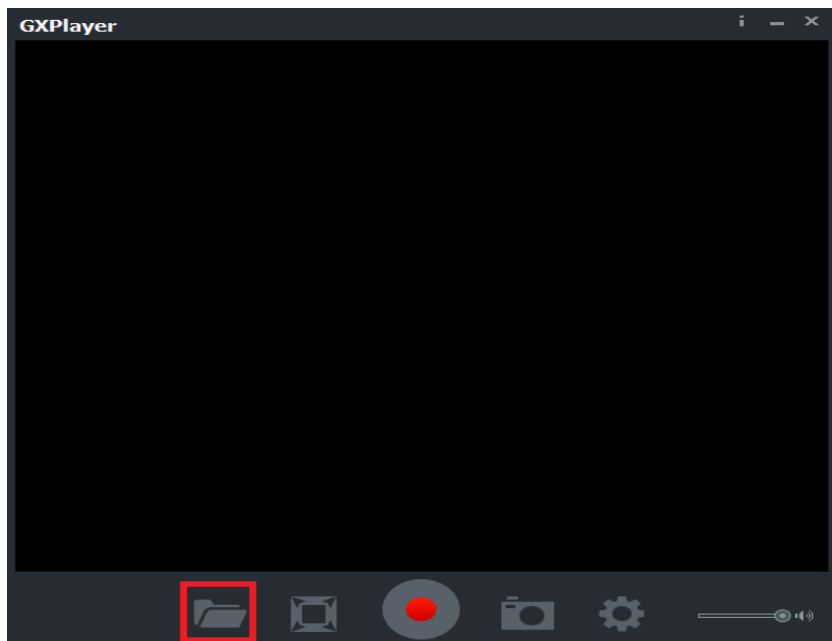
Fill in your Email address, Name and Code (The Code can be found on the CD cover as below) Then click on "OK" to finish the registration.



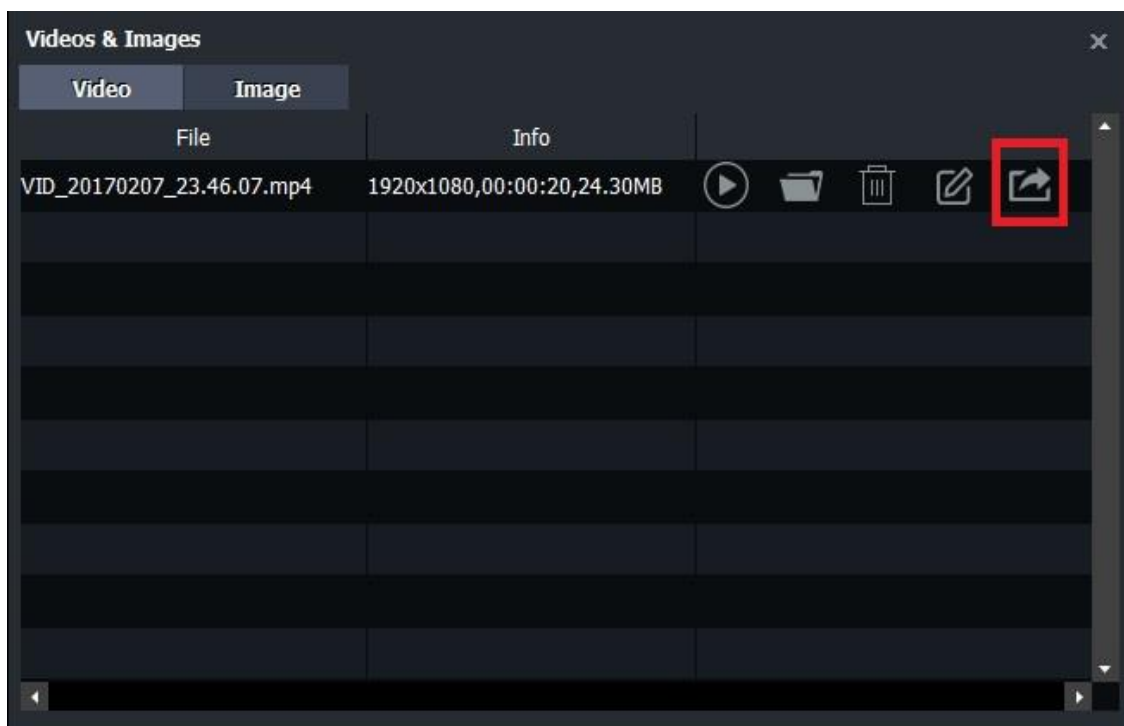
The software CD comes with famous video editing software Power Director licensed from Cyberlink. You can find the CD key on the back of CD cover

# Upload Video to YouTube

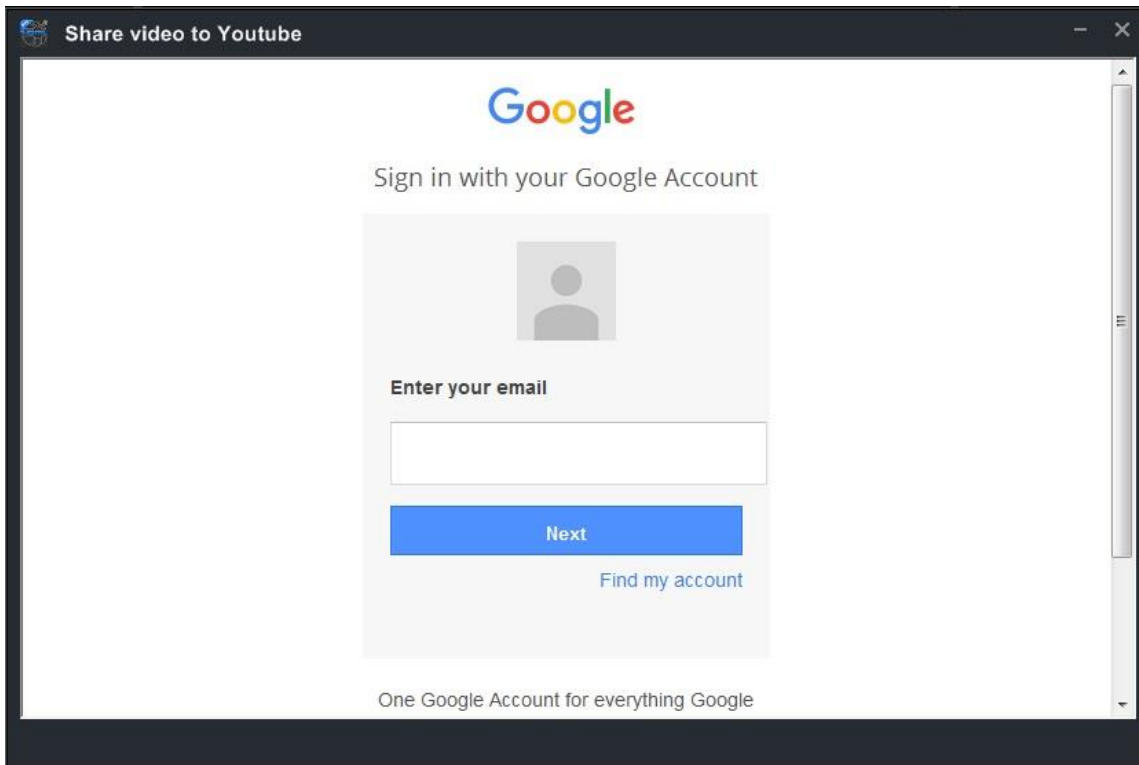
1. GXPlayer → Open below folder marked in red



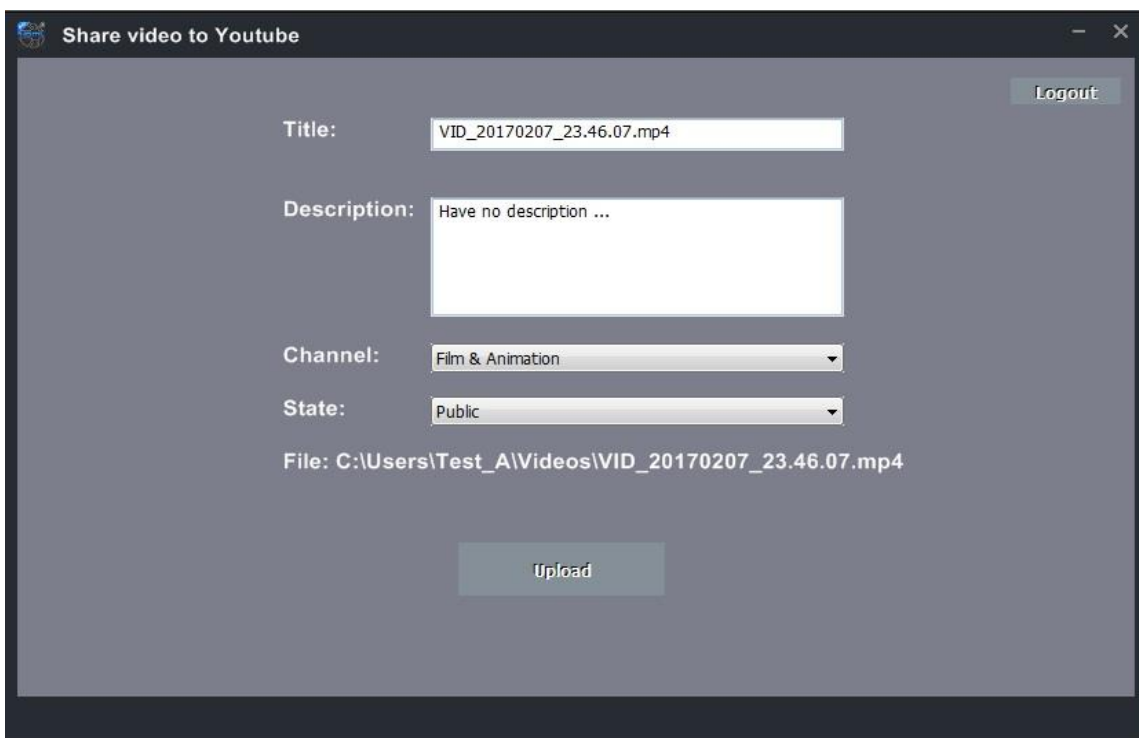
2. Click below mark in red to stream recorded video to YouTube



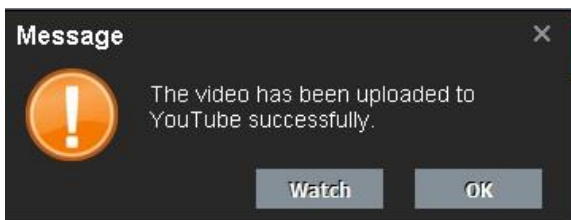
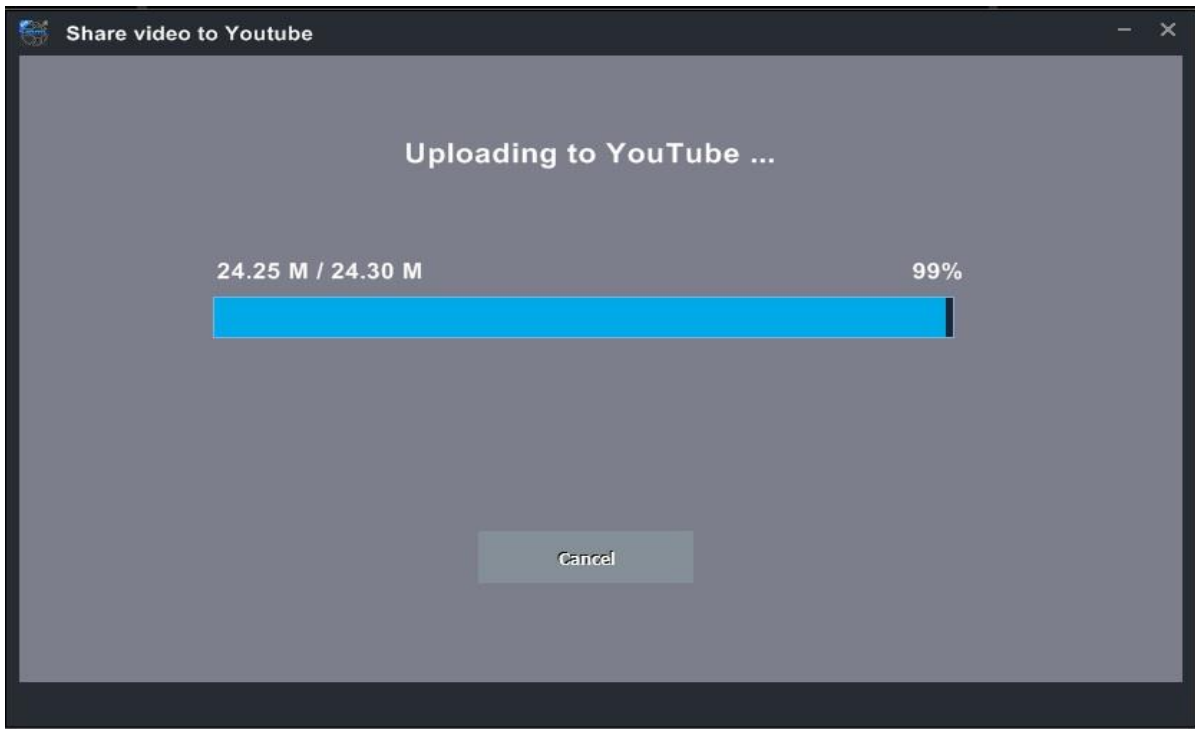
### 3. Input google ID & Password



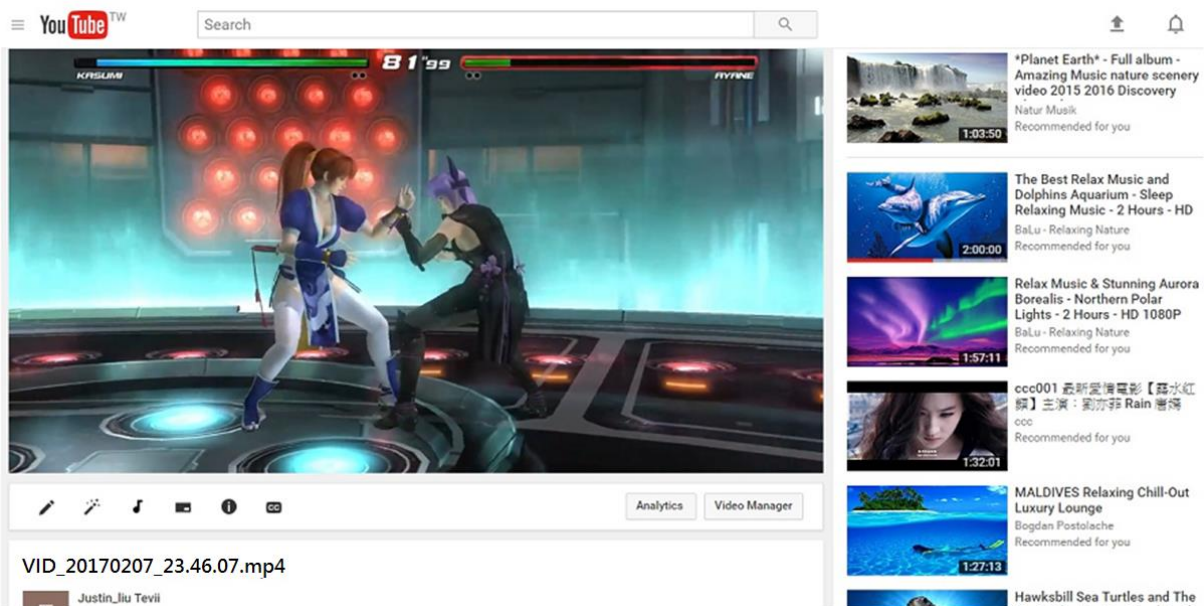
### 4. Edit the name & description of video which you pain to stream → Upload



## 5. Uploading completed → OK

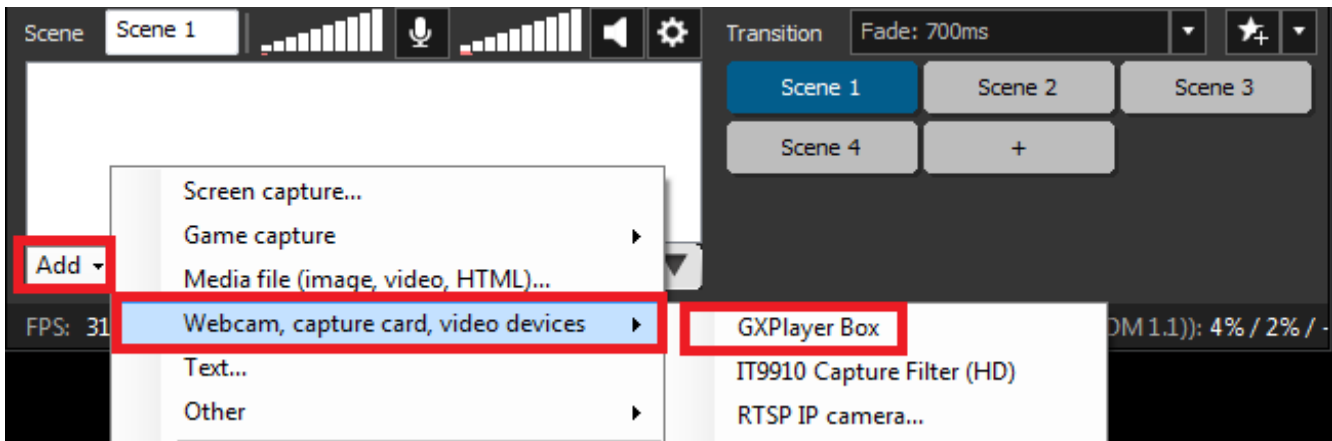


## 6. Open YouTube → My channel → You can find the video file you just uploaded

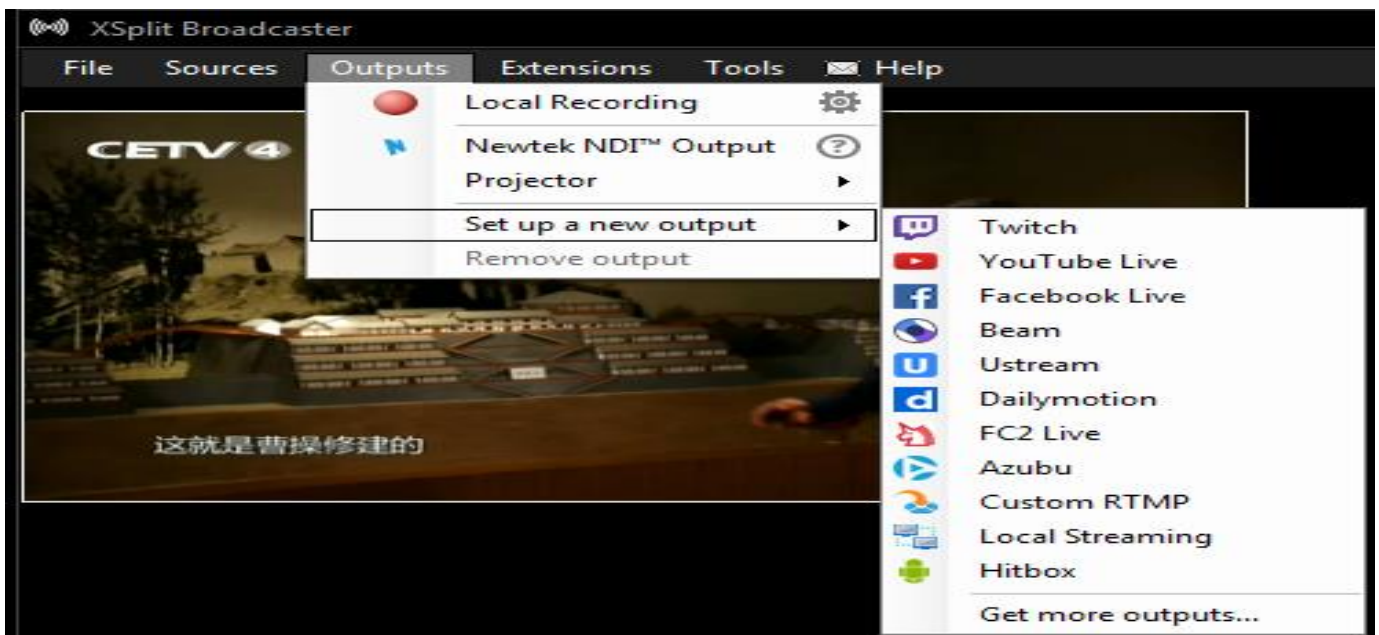


# Live Streaming via XSplit

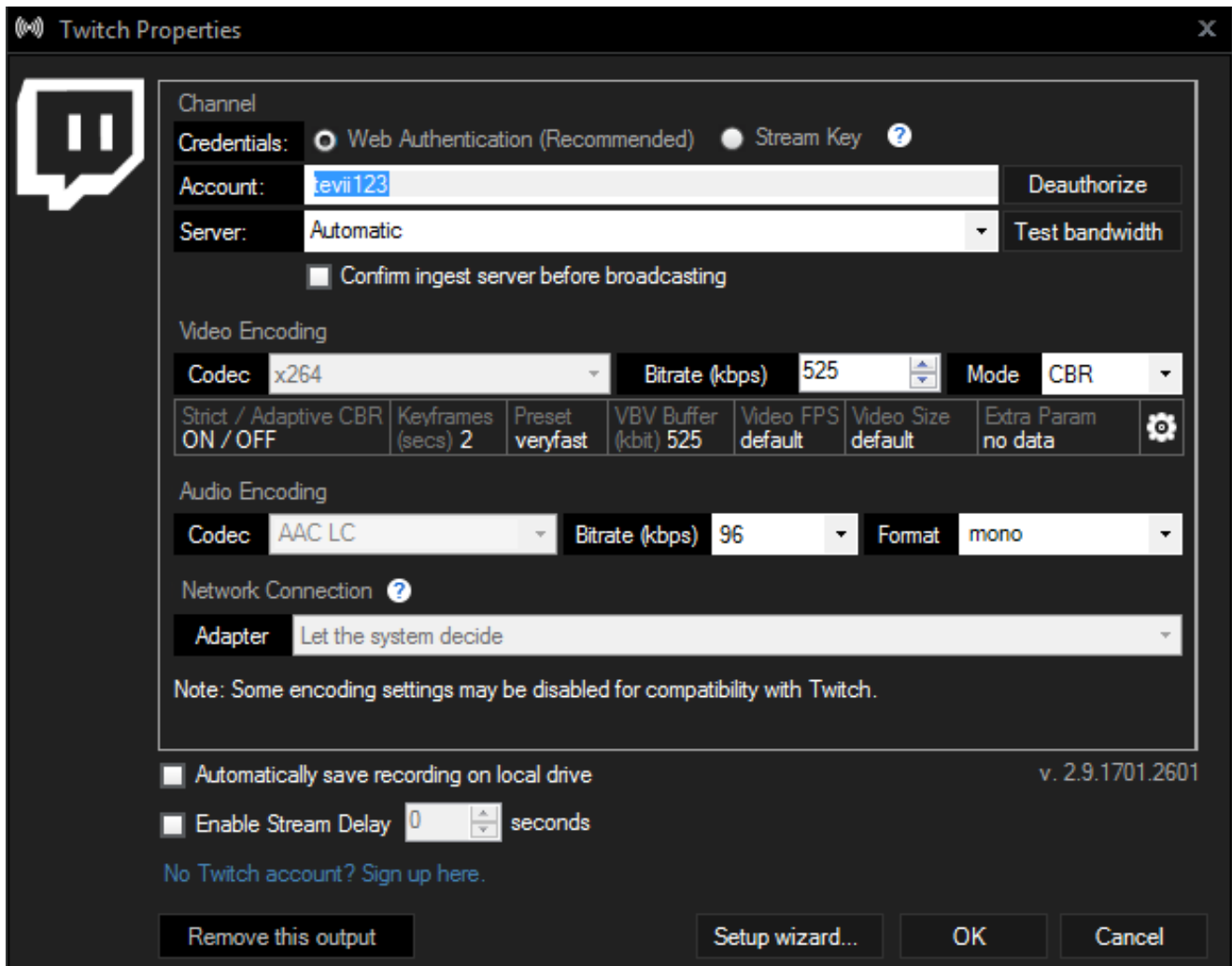
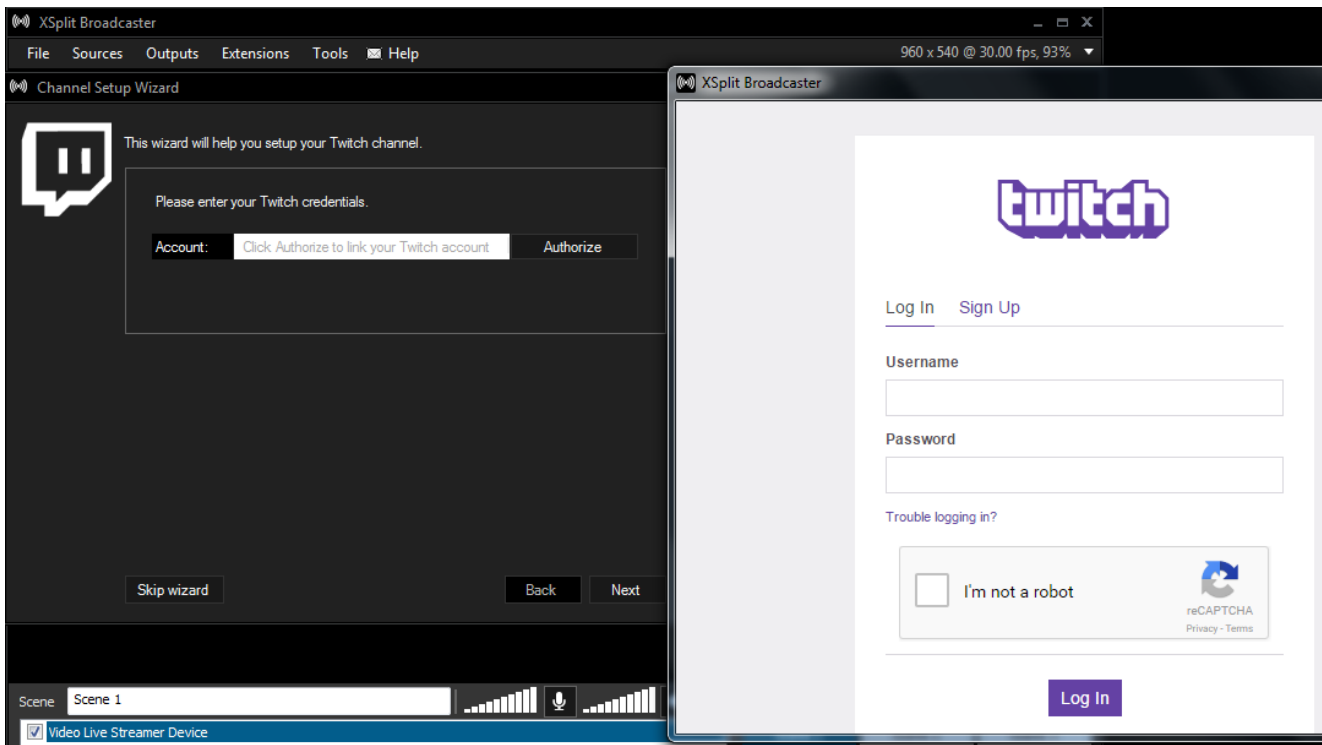
1. Download & open XSplit on your PC → add → webcam, capture card, video devices  
→GXPlayer Box

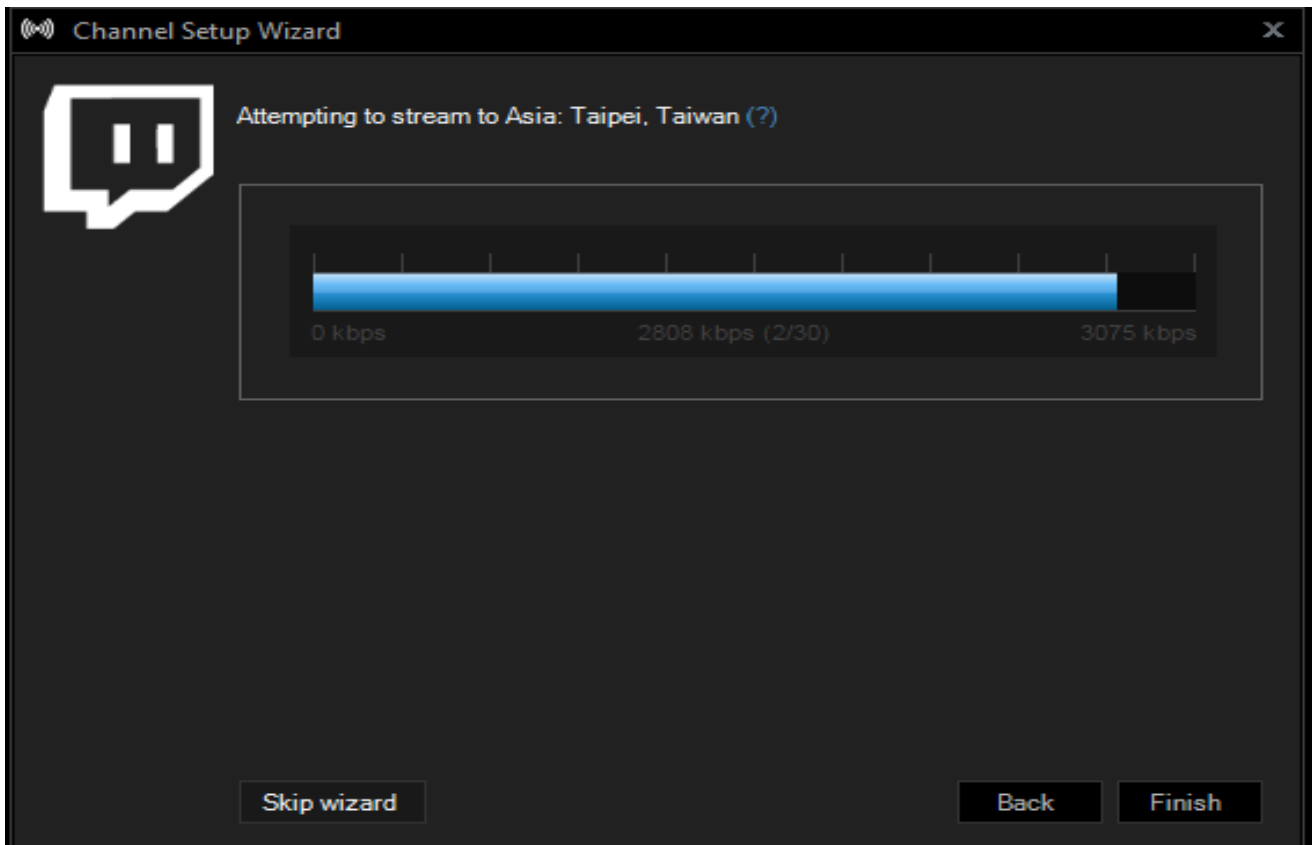


2. Outputs --> set up a new output --> (for example) Twitch

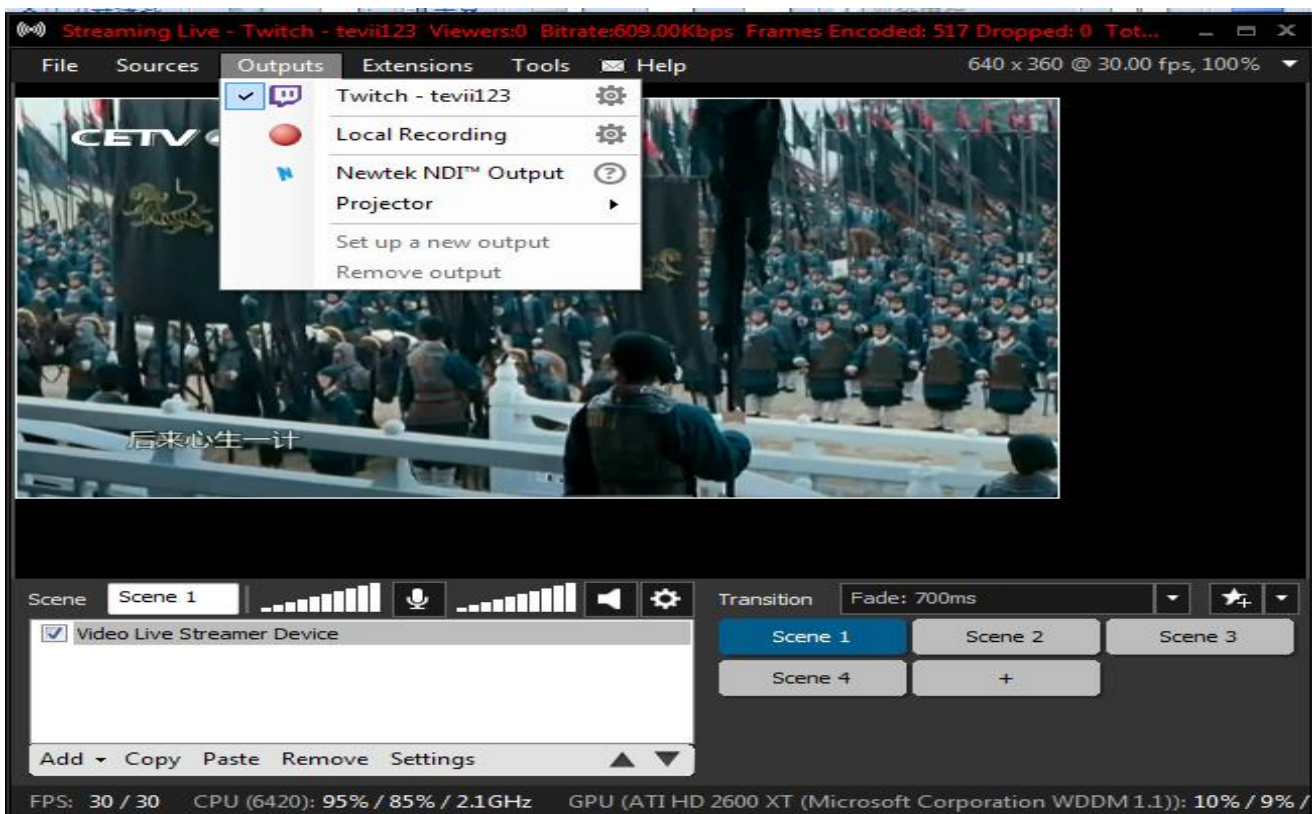


3. Enter ID, Password to Log In (please apply a new account for Twitch beforehand)





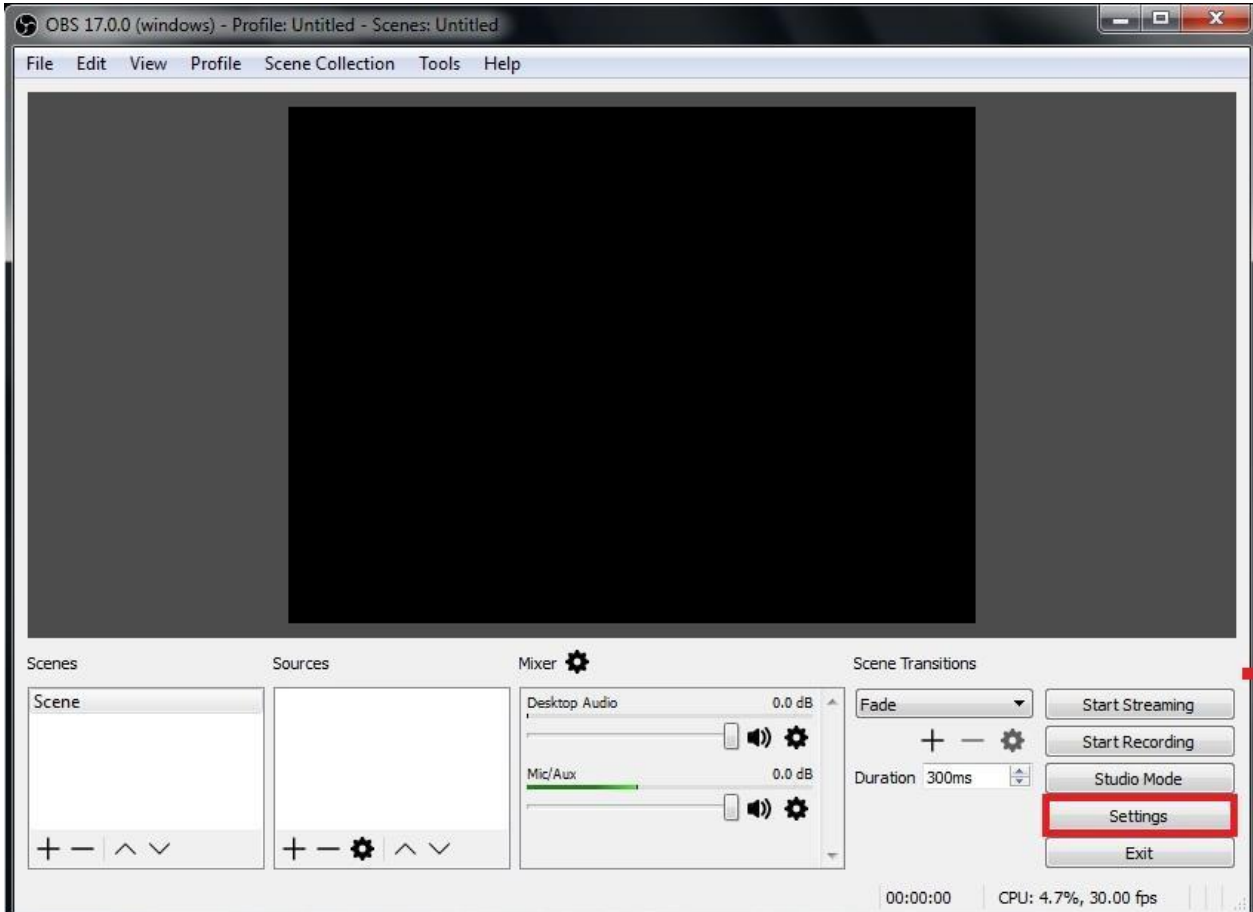
4. After set up completed , Click Outputs → Twitch- tevii123 to start streaming





# Live Streaming via OBS

Download & install the latest version of OBS and open it → Select “Settings”



1. Select “Stream “→ “Service” (website) →Streamer Key →OK



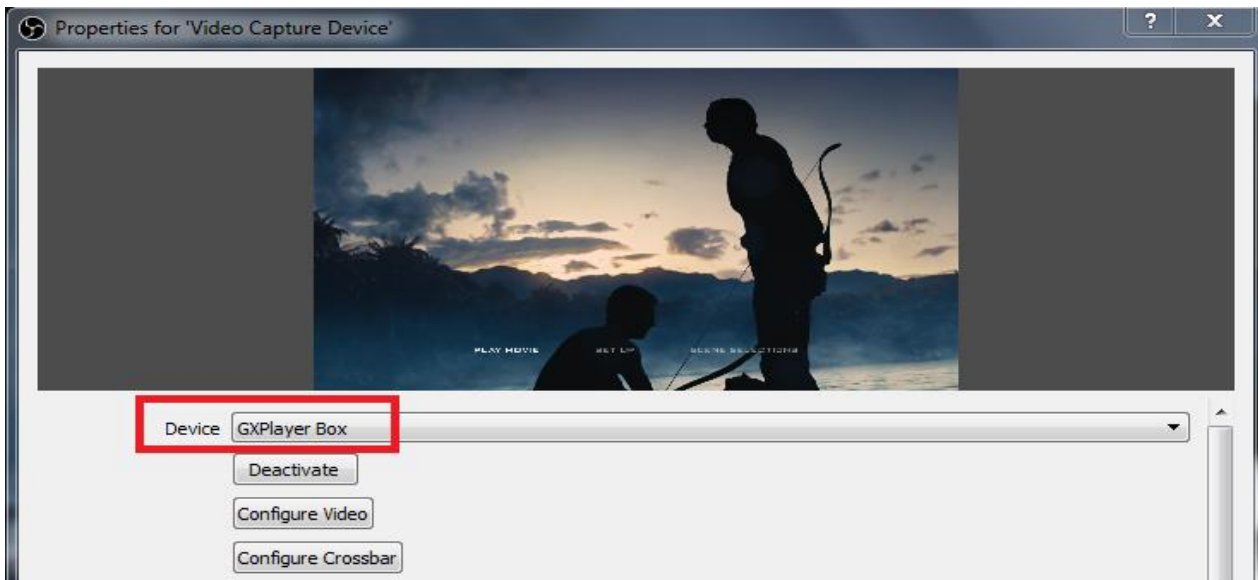
## 2. How to find your Stream Key (taking Twitch as example)

Open Twitch → Select Dashboard (A) → Settings (B) → Show Key (C)

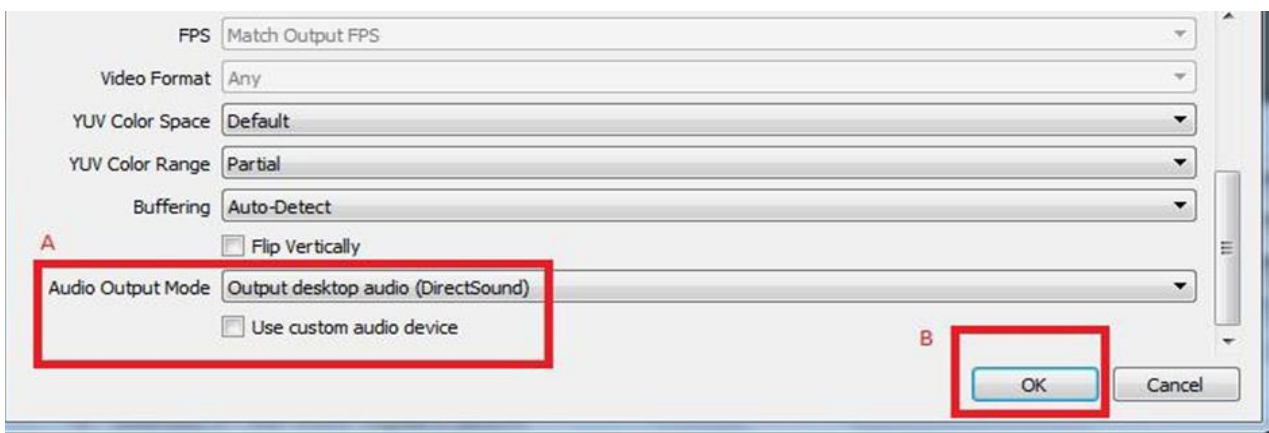
The screenshot shows the Twitch Dashboard interface. At the top, the word "Dashboard" is displayed. Below it, a navigation bar includes "Live", "Editing", "Activity", "Stats", "Settings", "Streaming Apps", "Event Manager", "Video Stats", "Moderation", and "Video Manager". The "Settings" option is highlighted with a red box and labeled "B". On the right side, a sidebar menu is visible, with "Dashboard" highlighted by a red box and labeled "A". In the main content area, the "Stream Preferences" section is shown, with a "Stream Key" subsection. Below the "Stream Key" text, a red button labeled "Show Key" is highlighted with a red box and labeled "C".

## 3. Sources → Add video capture device → Device option, select GXPlayer Box

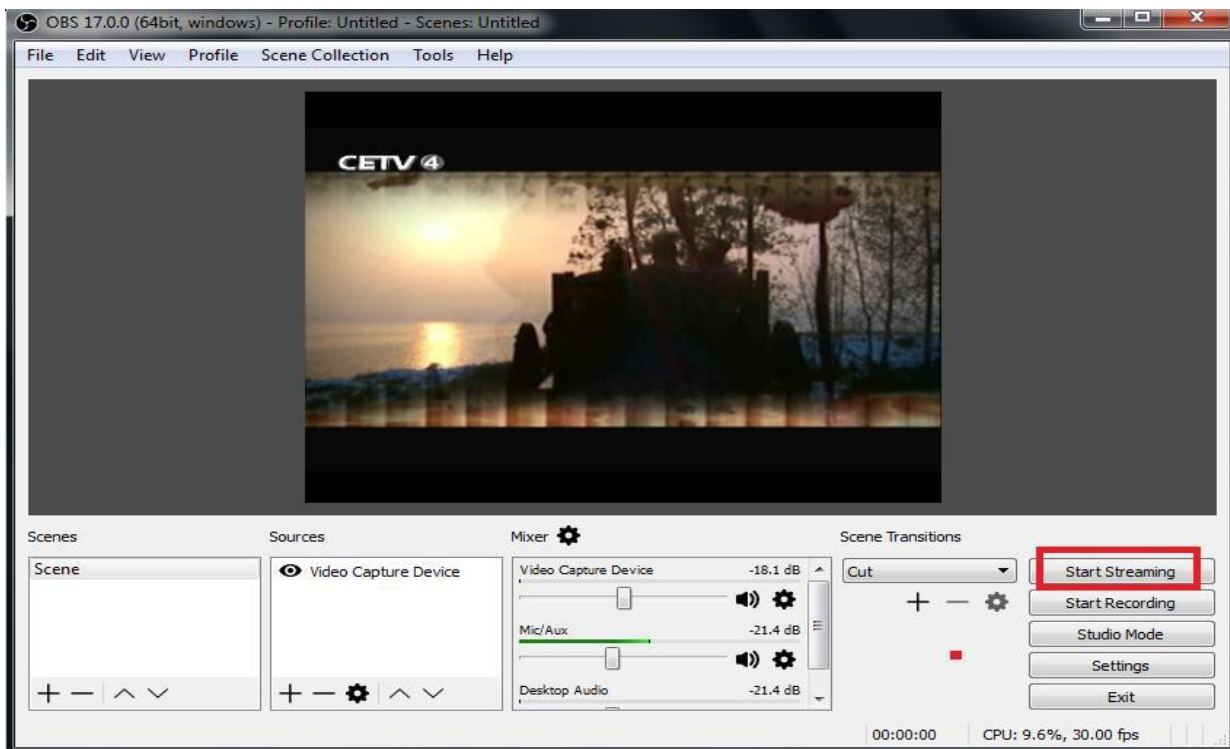
The screenshot shows the OBS Studio interface. The main window title is "OBS 17.0.0 (64bit, windows) - Profile: Untitled - Scenes: Untitled". The menu bar includes "File", "Edit", "View", "Profile", "Scene Collection", "Tools", and "Help". The main preview area displays a video of a sunset over a body of water with the text "CETV 4" in the top left corner. Below the preview, the "Sources" panel is highlighted with a red box and contains a single source named "Video Capture Device". To the right of the Sources panel is the "Mixer" panel, which shows volume levels for "Mic/Aux" (-10.0 dB), "Desktop Audio" (0.0 dB), and "Video Capture Device" (0.0 dB). On the far right, the "Scene Transitions" panel is visible, showing a "Fade" transition with a duration of "300ms".



4. Audio Output Mode → Output desktop audio (DirectSound) → OK

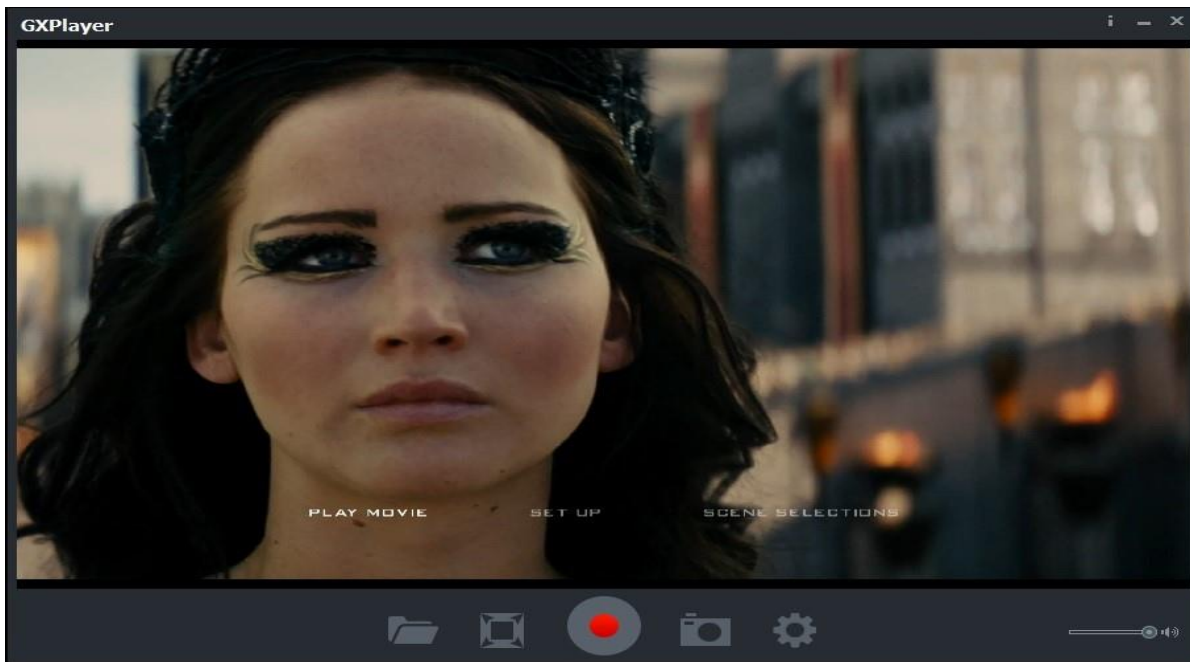



5. Press "Start Streaming"



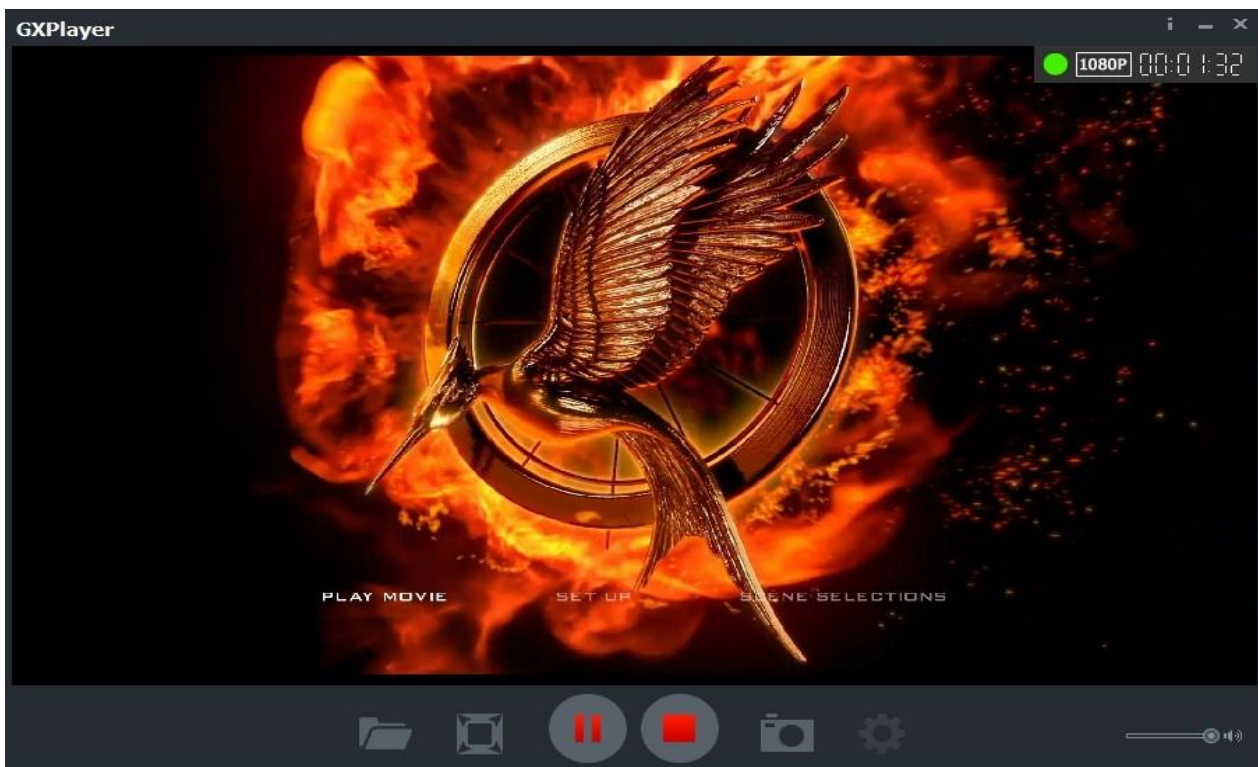
## Record/Capture to PC


1. After all devices are connected properly, run GXPlayer on your PC.




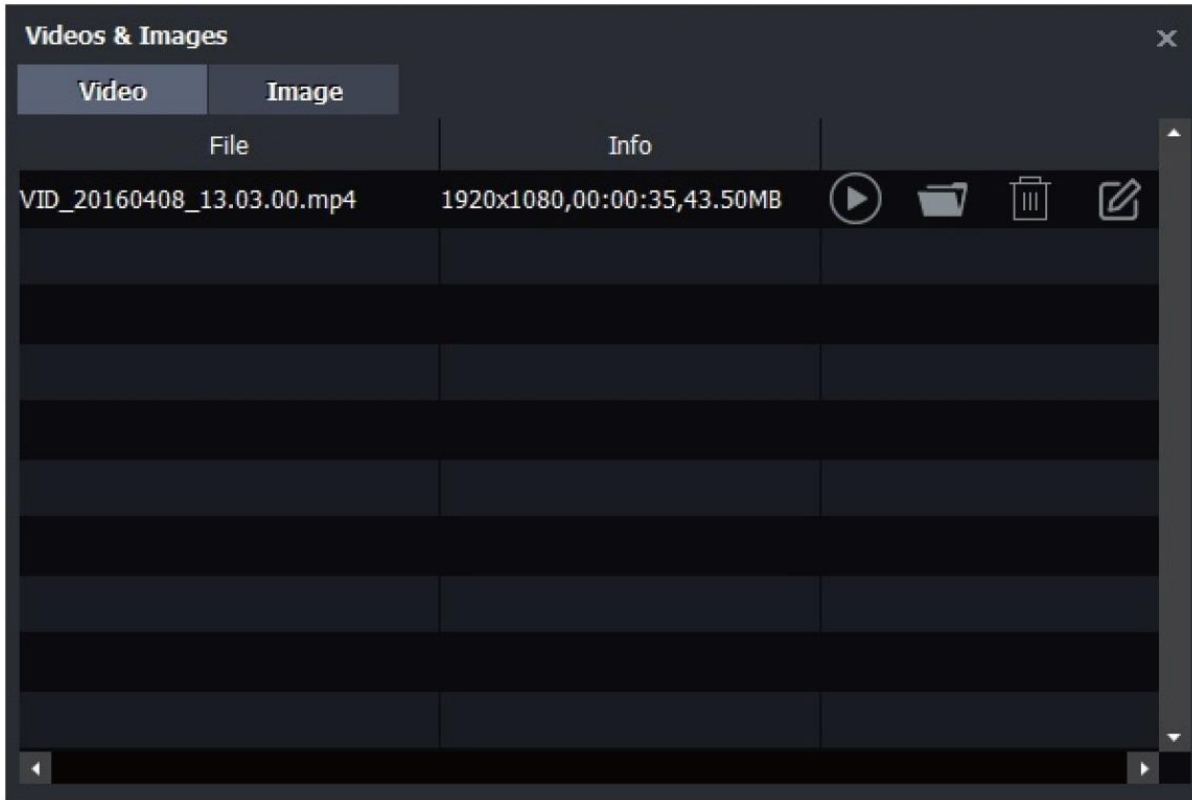
2. Click on  to start recording; click again to stop recording.

You can also click on  to capture a screenshot

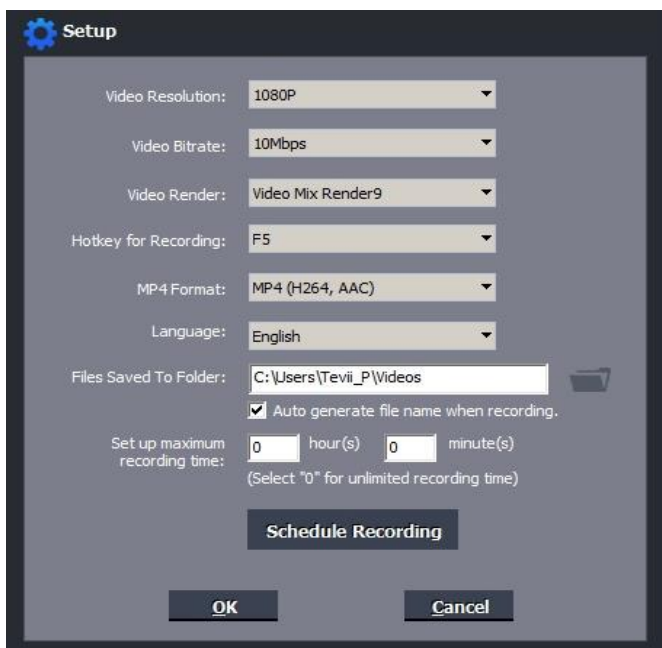


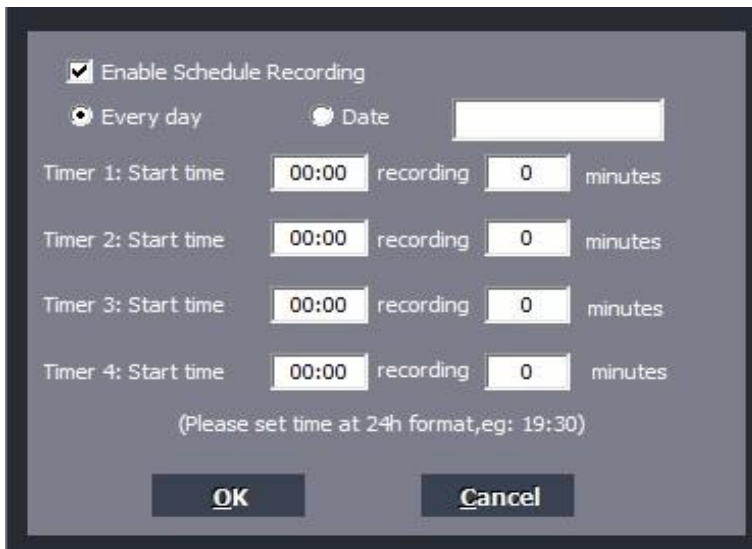
3. Click on  to view the recorded video files.

You can click on  to play back selected recorded video.



## Schedule Recording & Set up





**Video Resolution:** Set the recording resolution. 1080p, 720p and 480p are available.

**Video Bitrate:** 6Mbps, 8Mbps, 10Mbps, 12Mbps, 15Mbps and 18Mbps are available.

**Video Render:** Define the video render. Video Mix Render9 and Internal YUV Render are available.

**Hotkey for Recording:** Set the hotkey for starting and stopping recording videos.

**MP4 Format:** You are free to select MP4 Format as below:

MP4(H264, AAC), MP4(H264, AC3), MP4(H264, MP3), MPEGTS(H264, AAC)

**Language:** Set the language to be displayed on the screen. English, Japanese, Simplified Chinese and Traditional Chinese are available.

**Files Saved to Folder:** Displays the saving path of recorded videos. You can change the saving path by clicking on the folder button.

**Automatically generate the file name when recording starts:** If this option is selected, the titles of recorded videos will be named automatically.

**Set up maximum recording time:** Set the maximum recording time. D616/640 will stop recording when the time reaches the maximum recording time.

**Schedule Recording:** Allow you to preset recording up to 4 different schedules

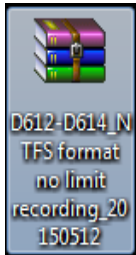
**OK:** Click to save the settings.

**Cancel:** Click to exit the "Setup" window without saving the settings.

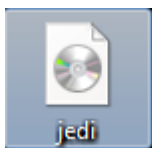
# New Firmware Upgrade Instruction

Upgrade Tool: please use a FAT32 formatted USB flash drive

1. Please unzip the firmware file



2. Save Jedi.img on USB Flash Drive



3. Connect USB Flash Drive to D614 with power off



4. Turn power on to start the firmware upgrade procedure.  
Now the blue-green light will flash slowly, please DO NOT unplug USB Flash Drive. When the upgrade is done, the blue-green light will flash in normal speed, please restart the HD capture box to complete the procedure. The Jedi.img file will be removed from USB Flash drive.



## Product Specifications

<b>Capture format</b>	<b>mp4 (H.264)</b>
<b>File recording format support</b>	<b>FAT32, NTFS</b>
<b>Input signals</b>	<b>HDMI</b>
<b>Output signal</b>	<b>HDMI (pass-through)</b>
<b>USB Port</b>	<b>USB2.0</b>
<b>Bit rate</b>	<b>Maximum 16Mbps (Default 10Mbps)</b>
<b>Recording capacity</b>	<b>2GB maximum per file</b>
<b>Maximum storage capacity</b>	<b>2TB for USB HDD</b>
<b>Power supply</b>	<b>DV 5V/2A</b>
<b>Weight</b>	<b>80g</b>
<b>Dimensions</b>	<b>86*86*21mm</b>

## Supported Resolutions

<b>Input/output</b>	1920x1080(50p),1920x1080(60p) 1920x1080(24p),1920x1080(25p),1920x1080(30p) 1920x1080(50i),1920x1080(60i),1280x1024(60p) 1280x720p(60p),1280x768(60p),1280x800(60p) 720x480(60i),720x480(50i) 640x480(60p),720x480(60p),720x576(50p)
<b>Record</b>	1920x1080(24p),1920x1080(25p),1920x1080(30p) 1280x720p(50p),1280x720p(60p) 640x480(60p),720x480(60p),720x576(50p)

**The HD Capture Dual LED lights will illuminate to indicate different status**

<b>LED Status</b>	<b>Function</b>
Blue / Green flashing	Power is on
Blue / Green flashing slowly	Saving recording to USB
Blue LED on	Input source is 1080i / p
Green LED on	Input source is 720i / p
Blue LED flashing	1080p recording
Green LED flashing	720p recording



## CONTACT

- If you encounter problems about using and upgrading hardware and software, please contact our support team: [sales@tevii.com](mailto:sales@tevii.com)  
Please download the software GXPlayer <http://www.tevii.com/Support.asp>